



**NOBLELIFT INTELLIGENT EQUIPMENT CO.,LTD.**

Address: 528 Changzhou Road, Taihu Sub-district,  
Changxing, Zhejiang 313100 China  
Tel: 86-572-6210817 6210311  
Fax: 86-572-6210777 6128612  
Email: [info@noblelift-access.com](mailto:info@noblelift-access.com)  
Web: [www.noblelift-access.com](http://www.noblelift-access.com)



Official website

[www.noblelift-access.com](http://www.noblelift-access.com)

**NOBLELIFT**

**FTH Series**

# TELEHANDLER PRODUCT SERIES

- Standard Telehandler
- Rotating Telehandler
- Telescopic Crane Loader



**NOBLELIFT INTELLIGENT EQUIPMENT CO.,LTD.**

# NOBLELIFT POWER Lift Your Business

Noblelift is a globally oriented enterprise that originated in China. It was listed on the main board of the Shanghai Stock Exchange in 2015 (stock code: 603611). The company specializes in the design, R&D, manufacturing, installation, commissioning, and technical services of intelligent warehousing and logistics equipment. Its product portfolio includes a full range of forklifts, MEWPs, automated storage and retrieval systems, intelligent conveying and sorting systems, AGV systems, integrated supply chain management software, and smart manufacturing solutions. As an innovation-driven provider of intelligent logistics solutions, Noblelift is committed to technological advancement and excellence.

For over 25 years, Noblelift has established R&D centers in China, France, and other locations, manufacturing bases in China and Southeast Asia (including Vietnam and Malaysia), and sales subsidiaries in North America, Europe, Russia, and Southeast Asia. Its global sales network now spans more than 120 countries and regions.



Full Range Intelligent Intralogistics System Provider



## Product Catalog

Products from NOBLELIFT’ s telescopic forklift range in standard, rotating, hoisting, box-in, mini, and other categories. They may be tailored to meet specific customer requirements, giving you one-stop shopping for all your product needs.

### Standard Telehandlers

- FTH3007/3507/4007-4Z
- FTH5010-4Z/FTH7510-4Z
- FTH4017/4517/5017-4Z/FTH7017-4Z

### Rotating Telehandlers

- FTHR4015-4Z

### Hoisting Telehandlers

- FTH110-2



## Engine

Equipped with a Cummins turbocharged diesel engine and high-pressure common rail fuel system, which has strong power, energy saving, and environmental protection, and meets the requirements of efficient operation.

The power system is equipped with an air-to-air cooling radiator to reduce the intake temperature of the engine, increase the intake air volume, and increase the engine power.



## Hydraulic System

Adapting closed hydraulic static walking, electro-hydraulic direct control, and lifting with hydraulic balancing function, it offers good automatic adaptability and control performance.

To guarantee the thermal balance of the entire machine, the hydraulic system is fitted with an oil return radiator and a back pressure prevention device.

Well-known brands provide closed plunger pumps, electronically controlled multi-way valves, hydraulic cylinders, hydraulic motors, and electronically controlled pilot valves.



## Fork

The work attachments can be readily replaced according to the work needs to satisfy the needs of "forking, hoisting, load-ing, grabbing, lifting, clamping, and moving" activities, realizing one machine with various applications.

The Cascade high-strength forks can double service life.

The quick-change shelf design allows for speedier accessory replacement.



## Drive Axle

Use high-quality axles and gearboxes to get optimal performance.

Adopt a completely hydraulic load-sensing steering system, four-wheel drive, and four-wheel steering, with the ability to vary between front-wheel, four-wheel, crab-shaped, and other steering modes to respond to changing work situations.

The turning radius is tiny, the maximum driving speed is 30km/h, and operating in a tight space is flexible, efficient, and convenient.





Working Equipment

The operational device is designed with a large-section, high-strength box structure, and finite element mechanics analysis for improved durability.

Torque limiter limits height, length, and weight for safe operation.

The pilot provides precise control over lifting, telescoping, and tilting actions, and two or more arm sections are selected based on different lifting heights.

Chassis

The extended wheelbase and box-shaped integrated frame enhance the chassis's rigidity, strength, and reliability.

The frame can be swung and leveled to ensure that the vehicle body operates smoothly even during complex procedures.



Tires

It has off-road herringbone tires, and the front and back axles can swing around the center with a 40% gradient. It provides excellent traction, passing, and off-road performance.



Braking System

Compared to traditional air brakes, Hydraulic wet brakes on both the front and back axles dissipate heat faster and provide more reliable and safe braking.

Cab

The spacious and comfortable driving space, low noise, good sealing, sunroof design, and fully open vision ensure a safe driving experience.

Features built-in heating and cooling air conditioning, as well as aircraft OPS premium chairs that are ergonomic and comfortable to sit on.

The adjustable steering gear, electronically regulated throttle, and integrated pilot handle provide a smooth and easy operation.

The multifunctional LCD display monitors the engine's functioning state, including speed, oil temperature, and water temperature.

Equipped with an anti-rollover cab that meets international safety standards, providing excellent driver protection.

Standard features include a reversing picture and buzzer for real-time monitoring of the working environment, decreasing blind spots and environmental risks.

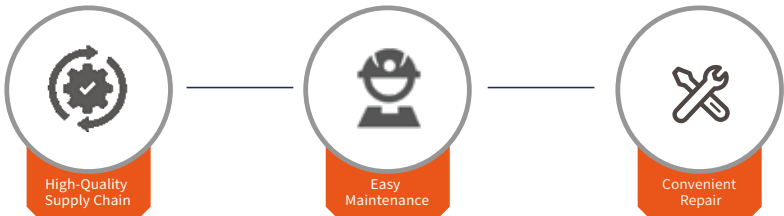


Battery and Maintenance

Made with domestic, high-quality electrical components, maintenance-free batteries, and flame-retardant wiring, ensuring reliability and durability.

The structural parts, transmission system, and hydraulic system are well-organized, and the engine hood's left and right repair windows offer ample area for efficient maintenance.

It boasts excellent adaptability, high-cost performance, and simple and quick daily maintenance due to the source of domestically produced and standardized parts.



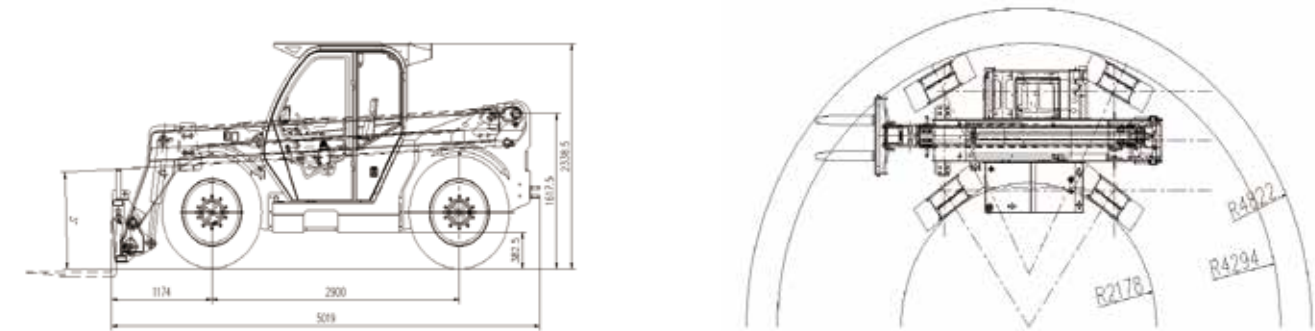
7 meter type

FTH3007/3507/4007-4ZIdeal for agricultural, animal husbandry, grain, material yards, logistics warehouses, and other fields.



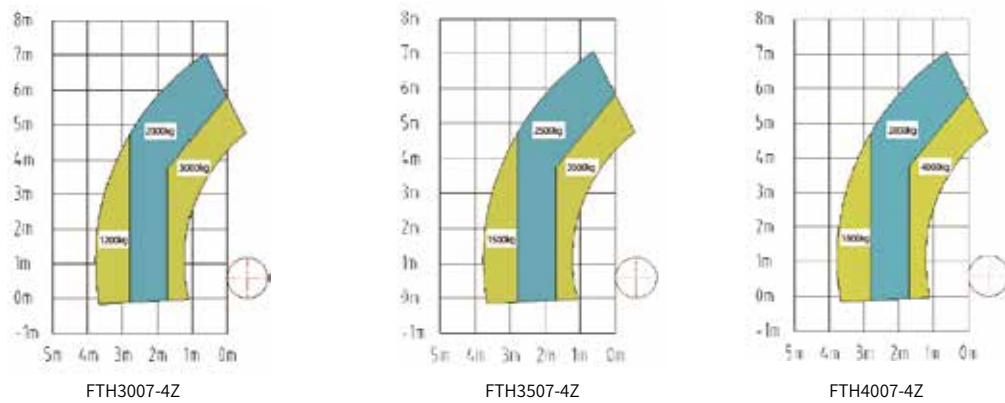
Performance	Unit	FTH3007/3507/4007-4Z
Max. capacity	kg	3000/3500/4000
Max. lifting height	mm	7050
Load Capacity at Max. Lift Height	kg	2200/2500/2800
Max. forward reach	mm	3220
Load capacity @ max. outreach	kg	1300/1500/1800
Boom Sections	-	2
Lifting/Lowering	S	9/6
Extension/Retraction	S	8/6
Weight and dimensions		
Length (without fork)	mm	5020
Overall width	mm	2250
Overall height	mm	2340
Wheel base	mm	2900
Ground clearance	mm	410
Turning radius(outside)	mm	4300
Cab width	mm	930
Fork angle (up/down)	°	12/100
Luffing angle	°	-3~63
Frame Leveling	+/- °	9
Overall weight	kg	8500/8600/8700
Forks dimension (L / W / T)	mm	1000*150*50
Engine		
Manufacturer	-	DF Cummins
Emission standard	-	EU Stage III
Model	-	QSB3.9-C100
Rated Power/speed	kW/rpm	74/2200

Load Charts



FTH3007-4Z/FTH3507-4Z / FTH4007-4Z

Load Charts



Engine	Unit	FTH3007/3507/4007-4Z
Max. torque/speed	N.m/rpm	330/1600
Displacement/Cylinders	L	3.9/4
Fuel tank	L	120
Battery	V	24
Transmission		
Transmission type	-	Hydraulic static transmission
Shifting	-	Automatic/Manual Shifting
Number of gears (forward/reverse)	-	2/2
Max. Travelling speed	km/h	30
Parking brake	-	Automatic parking brake
Service brake	-	Wet braking
Drawbar pull	kN	79
Gradeability	%	40
Hydraulic		
Hydraulic pump type	-	Variable Displacement Plunger Pump
Pressure/Flow	MPa/Lpm	(22/24/26) /150
Hydraulic Oil	L	160
Wheels, etc		
Standard tyres	-	16/70-24-24PR
Drive wheels (front / rear)	-	2/2
Steering mode	-	2 wheel steer;4 wheel steer;Crab mode
Safety cab homologation	-	ROPS/FOPS
Air-conditioning system	-	Cooling/heating
Controls	-	Electronic Joystick

Note:The above data are subject to change without prior notice

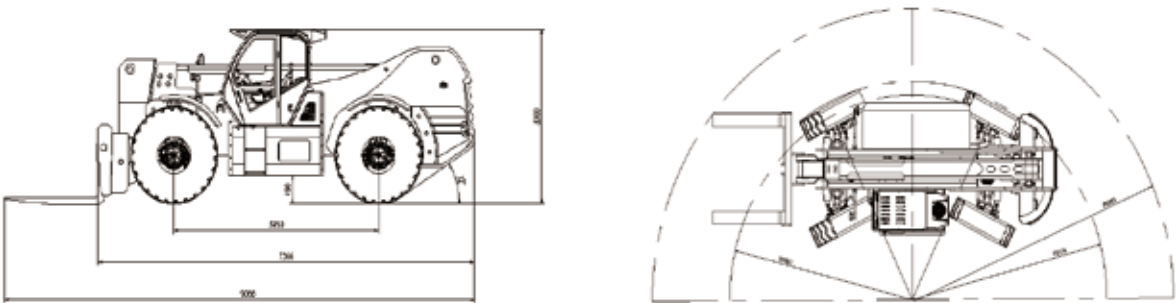


10 meters type

FTH5010-4Z/FTH7510-4Z.Ideal for manufacturers, logistics, handling, construction, warehousing, and other industries.

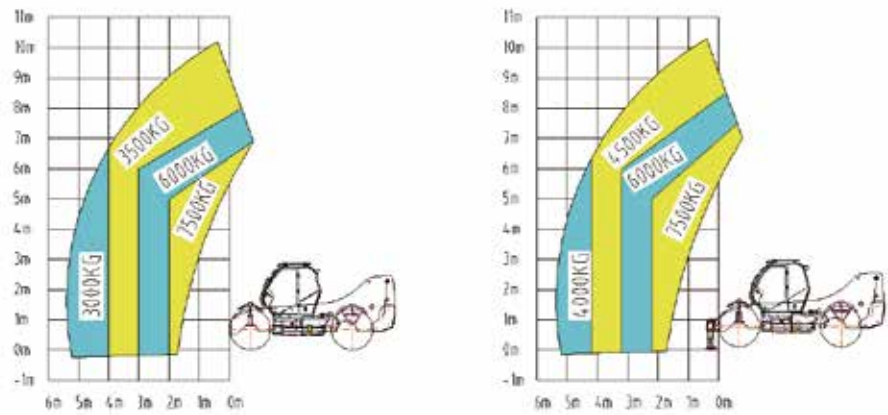


Load Charts



FTH7510-4Z

Load Charts



FTH7510-4Z

Performance	Unit	FTH5010-4Z	FTH7510-4Z
Max. capacity	kg	5000	7500
Max. lifting height	mm	10370	10370
Load Capacity at Max. Lift Height	kg	2500 (Outriggers down)	4500 (Outriggers down)
		1600 (Outriggers up)	3500 (Outriggers up)
Max. forward reach	mm	4700	4900
Load capacity @ max. outreach	kg	2500	2000
Boom Sections	-	2	2
Lifting/Lowering	S	19/17	19/17
Extension/Retraction	S	19/16	19/16
Weight and dimensions			
Length (without fork)	mm	6094	6685
Overall width	mm	2500	2500
Overall height	mm	2710	2710
Wheel base	mm	3070	3370
Ground clearance	mm	410	425
Turning radius(outside)	mm	4650	4900
Cab width	mm	930	930
Fork angle (up/down)	°	12/100	12/100
Luffing angle	°	-2~70	-2~70
Frame Leveling	+/- °	9	9
Overall weight	kg	14100	15500
Forks dimension (L /W / T)	mm	1000*150*50	1220*150*65
Engine			
Manufacturer	-	DF Cummins	DF Cummins
Emission standard	-	EU Stage III	EU Stage III
Model	-	QSB3.9-C125	QSB4.5-C160
Rated Power/speed	kW/rpm	93/2200	119/2200
Max. torque/speed	N.m/rpm	480/1350	624/1500
Displacement/Cylinders	L	3.9/4	4.5/4
Fuel tank	L	130	215
Battery	V	24	24
Transmission			
Transmission type	-	Hydrostatic Transmission	
Shifting	-	Automatic/Manual Shifting	
Number of gears (forward/reverse)	-	2/2	2/2
Max. Travelling speed	km/h	25	25
Parking brake	-	Automatic parking brake	
Service brake	-	Wet braking	
Drawbar pull	kN	79	70
Gradeability	%	25	25
Hydraulic			
Hydraulic pump type	-	Variable Displacement Plunger Pump	
Hydraulic flow/Pressure	MPa/Lpm	26/150	27/150
Hydraulic Oil	L	220	320
Wheels, etc			
Standard tyres	-	14.00-24-32PR	
Drive wheels (front / rear)	-	2/2	
Steering mode	-	2 wheel steer;4 wheel steer;Crab mode	
Safety cab homologation	-	ROPS/FOPS	
Air-conditioning system	-	Cooling/heating	
Controls	-	Electronic Joystick	

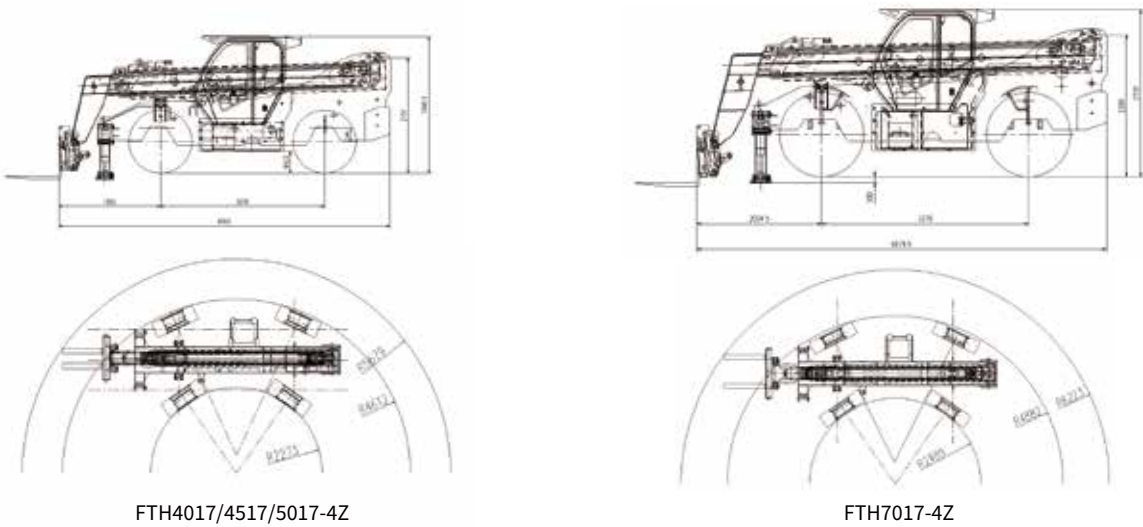
Note:The above data are subject to change without prior notice

17meter type

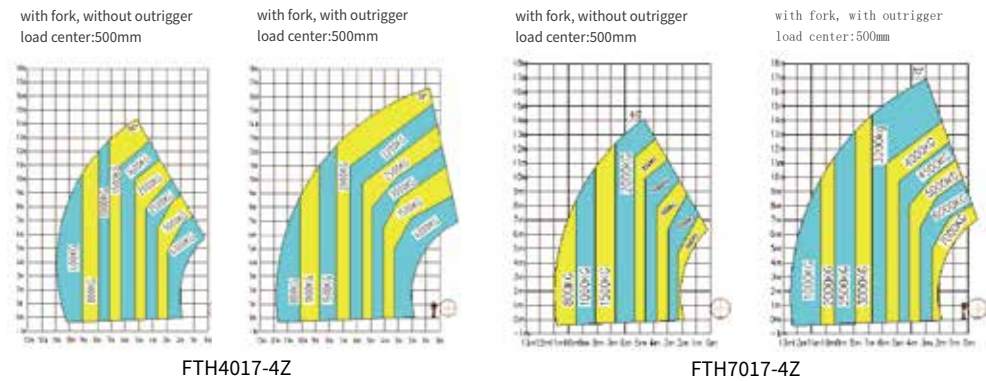
FTH4017/4517/5017-4Z FTH7017-4Z Ideal for construction, warehousing and logistics, airport terminals, high-altitude operations, emergency rescue, and other applications.



Load Charts



Load Charts



Performance	Unit	FTH4017/4517/5017-4Z	FTH7017-4Z
Max. capacity	kg	4000/4500/5000/7000	7000
Max. lifting height	mm	16625	16900
Load Capacity at Max. Lift Height	kg	2000 (Outriggers down) 1500 (Outriggers up)	3200 (Outriggers down) 2000 (Outriggers up)
Max. forward reach	mm	11265	11800
Load capacity @ max. outreach	kg	800 (Outriggers down) 400 (Outriggers up)	1000 (Outriggers down) 800 (Outriggers up)
Boom Sections	-	4	4
Lifting/Lowering	S	19/17	19/17
Extension/Retraction	S	19/16	19/16
Weight and dimensions			
Length (without fork)	mm	6200	6720
Overall width	mm	2500	2500
Overall height	mm	2560	2710
Wheel base	mm	3070	3370
Ground clearance	mm	410	425
Turning radius(outside)	mm	4650	4900
Cab width	mm	930	930
Fork angle (up/down)	°	12/100	12/100
Luffing angle	°	-2~78	-2~70
Frame Leveling	+/- °	9	9
Overall weight	kg	14500/14800/15000	16000
Forks dimension (L /W / T)	mm	1000*150*50	1220*150*65
Engine			
Manufacturer	-	DF Cummins	DF Cummins
Emission standard	-	EU Stage III	EU Stage III
Model	-	QSB3.9-C125	QSB4.5-C160
Rated Power/speed	kW/rpm	93/2200	119/2200
Max. torque/speed	N.m/rpm	480/1350	624/1500
Displacement/Cylinders	L	3.9/4	4.5/4
Fuel tank	L	130	215
Battery	V	24	24
Transmission			
Transmission type	-	Hydraulic static transmission	
Shifting	-	Automatic/Manual Shifting	
Number of gears (forward / reverse)	-	2/2	
Max. Travelling speed	km/h	25	
Parking brake	-	Automatic parking brake	
Service brake	-	Wet braking	
Drawbar pull	kN	79	
Gradeability	%	25	
Hydraulic			
Hydraulic pump type	-	Variable Displacement Plunger Pump	
Pressure/Flow	MPa/Lpm	26/150	27/150
Hydraulic Oil	L	220	220
Wheels, etc			
Standard tyres	-	16/70-24-24PR	14.00-24-32PR
Drive wheels (front / rear)	-	2/2	2/2
Steering mode	-	2 wheel steer;4 wheel steer;Crab mode	
Safety cab homologation	-	ROPS/FOPS	
Air-conditioning system	-	Cooling/heating	
Controls	-	Electronic Joystick	

Note: The above data are subject to change without prior notice



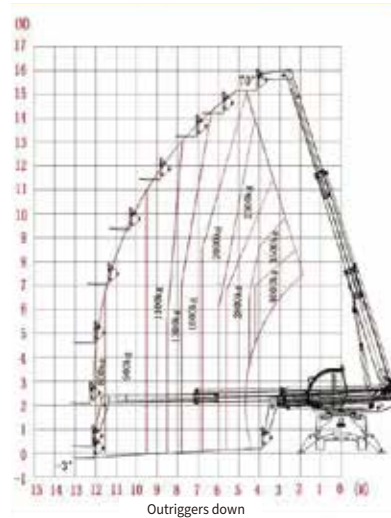
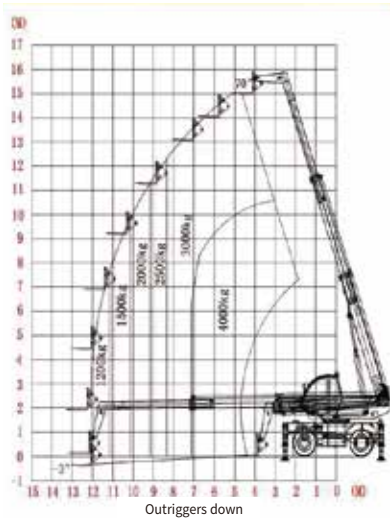
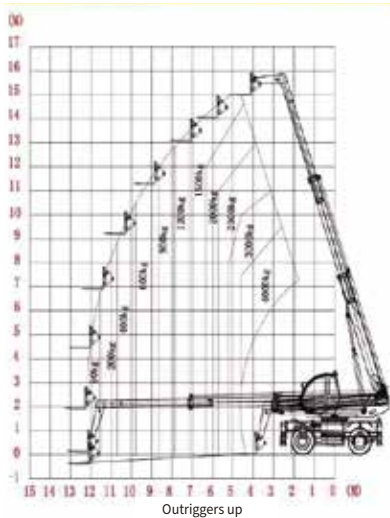
FTHR4015-4Z

Rotate+ to expand additional choices.

The FTHR4015-4Z forklift is a versatile machine with off-road capability and a telescopic arm. It is a rotating telescopic forklift suitable for the construction industry and certain industrial fields. It is the first of its kind in China. FTHR4015 is powered by a diesel engine, hydrostatic transmission, pilot control, four-wheel steering and four-wheel drive (4WS4WD) with outriggers, drop arm and telescopic belt with hydraulic balancing, lifting height of 15 meters, load capacity of 4.0 tons, body rotation 360 ° , maximum forward reach 10500 mm (distance from the front end of the front tire to the load center), and can function as a telescopic forklift, crane, or working platform as needed.



Load Charts



Performance		Unit	FTHR4015-4Z
Max. capacity		kg	4000
Max. lifting height		mm	15000
Load Capacity at Max. Lift Height		kg	2500 (Outriggers down) 1500 (Outriggers up)
Max. forward reach		mm	10500
Load capacity @ max. outreach		kg	1000 (Outriggers down) 800 (Outriggers up)
Boom Sections		-	3
Out trigger type		-	Hydraulic (2F/2R)
Lifting/Lowering		S	19/17
Extension/Retraction		S	19/16
Weight and dimensions			
Length (without fork)		mm	6638
Overall width		mm	2550
Overall height		mm	3513
Wheel base		mm	2800
Ground clearance		mm	340
Turning radius(outside)		mm	5000
Cab width		mm	950
Fork angle (up/down)		°	12/ 120
Luffing angle		°	-2~70
Frame Leveling		+/- °	9
Overall weight		kg	16000
Forks dimension (L /W / T)		mm	1000*150*50
Platform (L /W / H)		mm	1200*800*970
Engine			
Manufacturer		-	DF Cummins
Emission standard		-	EURO 3
Model		-	QSB3.9-C125
Displacement/Cylinders		L	3.9/4
Rated Power/speed		kW/rpm	(93/2200)/(125/2200)
Max. torque/speed		N.m/rpm	(480/1350)/(670/2200)
Fuel tank		L	165
Battery		V	24
Transmission			
Transmission type		-	Hydrostatic Transmission
Shifting		-	Automatic/Manual Shifting
Number of gears (forward/reverse)		-	2/2
Max. Travelling speed		km/h	25
Parking brake		-	Air push drum brake
Service brake		-	Clamp-disc brake
Drawbar pull		kN	80
Gradeability		%	25
Hydraulic			
Hydraulic pump type		-	Variable Displacement Plunger Pump
Pressure/Flow		MPa/Lpm	27/150
Hydraulic Oil		L	198
Wheels, etc			
Standard tyres		-	16/70-24-24PR
Drive wheels (front / rear)		-	2/2
Steering mode		-	2 wheel steer;4 wheel steer;Crab mode
Safety cab homologation		-	ROPS/FOPS
Air-conditioning system		-	Cooling/heating
Controls		-	Electronic Joystick

Note: The above data are subject to change without prior notice

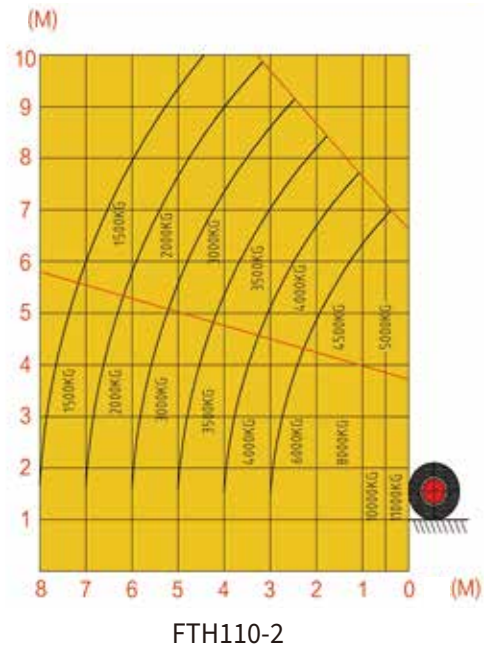
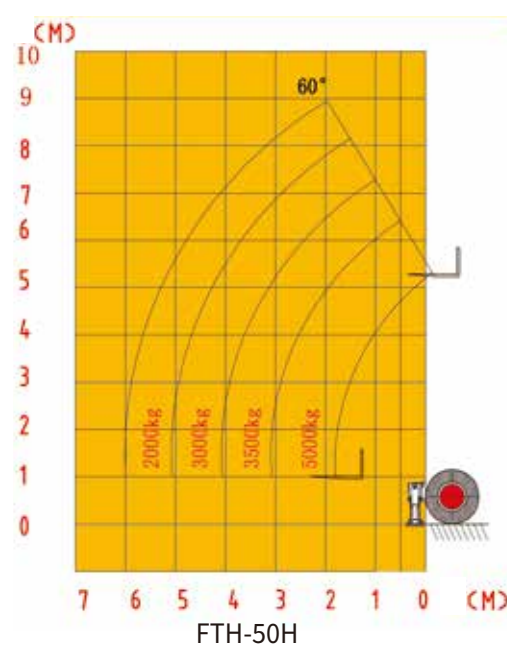


FTH-50H/FTH110-2  
Special telescopic hoisting machine for stones

The chassis of the FTH110-2 telescopic crane loader is front-wheel drive, rear-wheel steering, rigid suspension; adopts hydro-mechanical transmission with two-speed forward and two-speed reverse, full hydraulic power steering; the working device is composed of the three-stage quadrilateral telescopic boom and boom quick change device and a hook, This telescopic crane loader is not only applicable to lifting the stone slabs in containers. but also can be used as a general crane, and can be widely used in factory, dock, freight yards, forestry, construction material, warehouses, logistics, and other industries, it is a loading and unloading machine with wide adaptability and high efficiency.



Load Charts



Performance	Unit	FTH-50H	FTH110-2
Max. capacity	kg	5000	11000
Max. lifting height	mm	4500	7605 (Main Hook) 10300 (Front Lifting Point)
Load Capacity at Max. Lift Height	kg	1500	1500
Max. forward reach	mm	7300	4800 (Main Hook) 7900 (Full Boom)
Load capacity @ max. outreach	kg	1500	1500
Boom Sections	-	3	3
Lifting/Lowering	S	16/14	16/14
Extension/Retraction	S	14/12	14/12
Weight and dimensions			
Length (without fork)	mm	5288	5288 (Excluding Boom)
Overall width	mm	2350	2350
Overall height	mm	2655	2715
Wheel base	mm	2988	2988
Ground clearance	mm	310	310
Turning radius(outside)	mm	6800	6800
Cab width	mm	870	870
Fork angle (up/down)	°	22°/24°	22°/24° (Boom)
Luffing angle	°	-14°~43°	-14°~43°
Frame Leveling	+/- °	9	9
Overall weight	kg	13000	13000
Forks dimension (L / W / T)	mm	/	/
Engine			
Manufacturer	-	YUCHAI	YUCHAI
Emission standard	-	EU Stage III	EU Stage III
Model	-	YC4DK100	YC4DK100
Displacement/Cylinders	L	3.7/4	3.7/4
Rated Power/speed	kW/rpm	73.5/2200	73.5/2200
Max. torque/speed	N.m/rpm	400/1400-1600	400/1400-1600
Fuel tank	L	280	280
Battery	V	24	24
Transmission			
Transmission type	-	Hydraulic Transmission	Hydraulic Transmission
Shifting	-	Manual Gear Shift	Manual Gear Shift
Number of gears (forward / reverse)	-	2/2	2/2
Max. Travelling speed	km/h	25	25
Parking brake	-	Automatic parking brake	Automatic parking brake
Service brake	-	Clamp-disc brake	Clamp-disc brake
Drawbar pull	kN	52	52
Gradeability	%	20	20
Hydraulic			
Hydraulic pump type	-	Variable Displacement Plunger Pump	Variable Displacement Plunger Pump
Pressure/Flow	MPa/Lpm	20/79	20/79
Hydraulic Oil	L	210	210
Wheels, etc			
Standard tyres	-	10.00-20 ( Front Wheel) 9.00-20 (Rear Wheel)	10.00-20 ( Front Wheel) 9.00-20 (Rear Wheel)
Drive wheels (front / rear)	-	2/0	2/0
Steering mode	-	2 wheel steer	2 wheel steer
Safety cab homologation	-	/	/
Air-conditioning system	-	Cooling/heating	Cooling/heating
Controls	-	Hydraulic Control Handle	Hydraulic Control Handle

Note: The above data are subject to change without prior notice

# Attachments

## Expandable multipurpose attachment

To broaden the range of product applications,Noblelift offers a variety of multi-functional attachments for use with telescopic series products. These attachments are compatible with quick-change joints, and the operator can switch between them easily by controlling them from the cab. The rapid coupling capability reduces time and personnel expenses while creating value for consumers.



Working Together For A Shared Future